

LEUTER HI-SPEED HEADS

HIGH SPEED MILLING DIES, ALUMINUM PARTS,
EDM ELECTRODES, ETC.

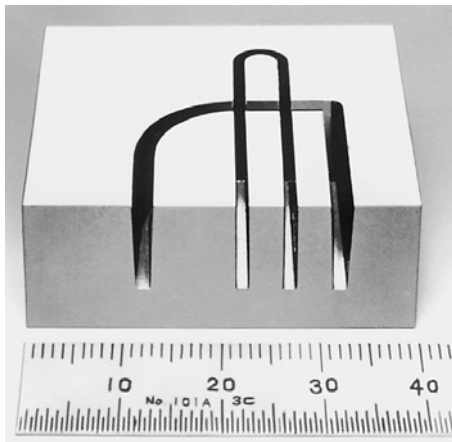


- HIGH SPEED OPERATION FROM 4,000 TO 60,000 R.P.M.
- CONTINUOUS AND SMOOTH OUTPUT FROM 200 TO 600W
- AUTOMATIC SHUT-OFF SWITCH FOR SAFETY
- LOAD MONITORING METER ON POWER SUPPLY

LEUTER HI-SPEED HEADS NO MACHINE SPINDLE ROTATION REQUIRED



Hi-Speed Head
Model #HS-2400



Super finish at high feed rate in small grooving.

MODEL NO.	POWER SUPPLY	POWER SOURCE	OUTPUT
HS-2220	HSC-2220	220V,3PH,60HZ	300W
HS-2400	HSC-2400	220V,3PH,60HZ	400W
HS-2500	HSC-2500	220V,3PH,60HZ	200W
HS-2600	HSC-2600	220V,3PH,60HZ	300W
HS-3100	HSC-3100	220V,3PH,60HZ	600W

4,000 - 60,000 R.P.M.

Stepless variable speed control

CONTINUOUS SMOOTH OPERATION FOR MANY HOURS

Self contained, built-in air cooling system

NO DAILY MAINTENANCE REQUIRED

Spindle bearings completely sealed and packed with special grease, run many months without maintenance.

CONCENTRICITY WITHIN .0004" T.I.R.

Suitable for small milling and drilling operations at high R. P. M. Most ideal for machining dies, aluminum parts, EDM electrodes, etc.

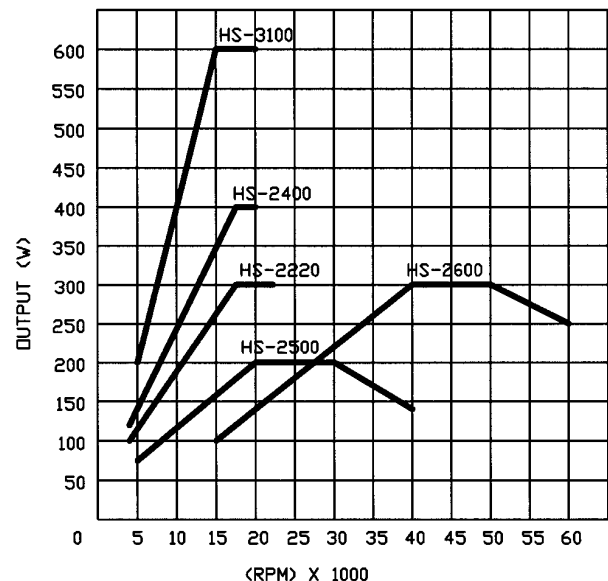
LOAD METER ON POWER SUPPLY

Displaying the machining load constantly at power supply to maximize efficiency.

AUTOMATIC SHUT-OFF FOR SAFETY

Power supply equipped with high efficiency inverter and automatic shut-off switch for over load.

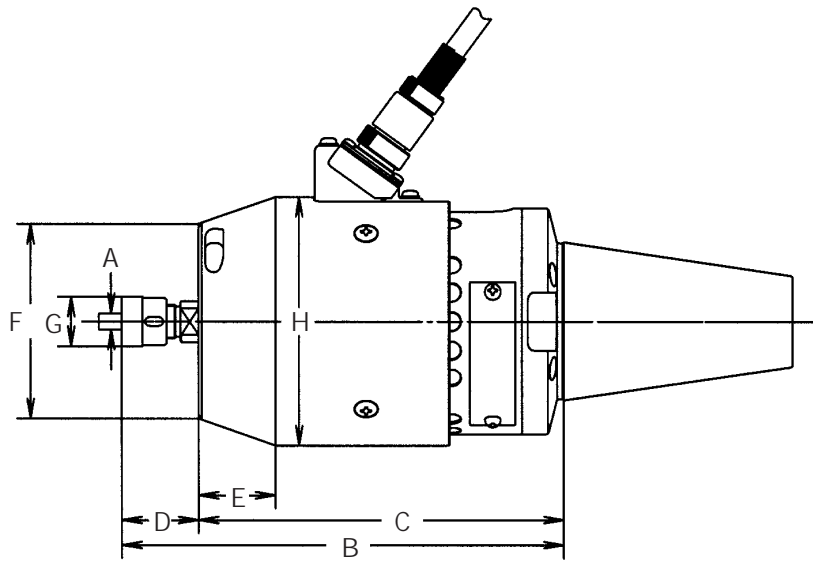
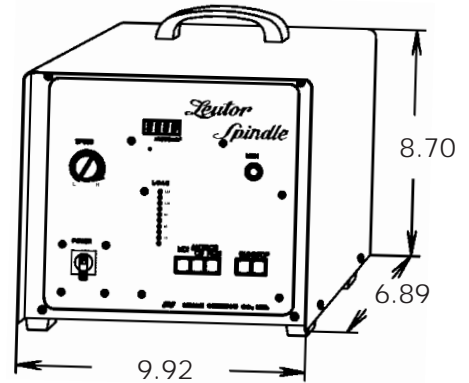
REPLACEABLE SHANK FOR VARIETY OF MACHINE SPINDLE ON MODEL HS-2220, HS-2400, HS-2500, AND HS-2600.



LEUTER HI-SPEED HEAD MODEL #HS-2220



- QUICK POWER CONNECTOR
Quick disconnecting electric cord provided with power supply.



HI-SPEED HEAD

ORDER NO	R.P.M.	OUTPUT	COLLET	RANGE A	B	C	D	E	F	G	H	WT.(lb)
HS-2220	4,000-22,200	300W	#102	.020 - .276	7.69	6.36	1.33	1.34	3.39	.87	4.33	18.5

Note: Select the shank (bolted-on and replaceable) when ordering.

Note: Complete with shank, power supply, wrenches and collets (1 ea. for 1/8, 3/16 and 1/4").

SHANKS

TAPER	V FLANGE	BT FLANGE	NMTB	STRAIGHT
35	--	10235	--	--
40	11140	10240	10400	--
45	11145	10245	--	--
50	11150	10250	10500	--
3/4	--	--	--	11006
1	--	--	--	11008

Note: Both V and BT shanks come without flange for ATC.

COLLETS

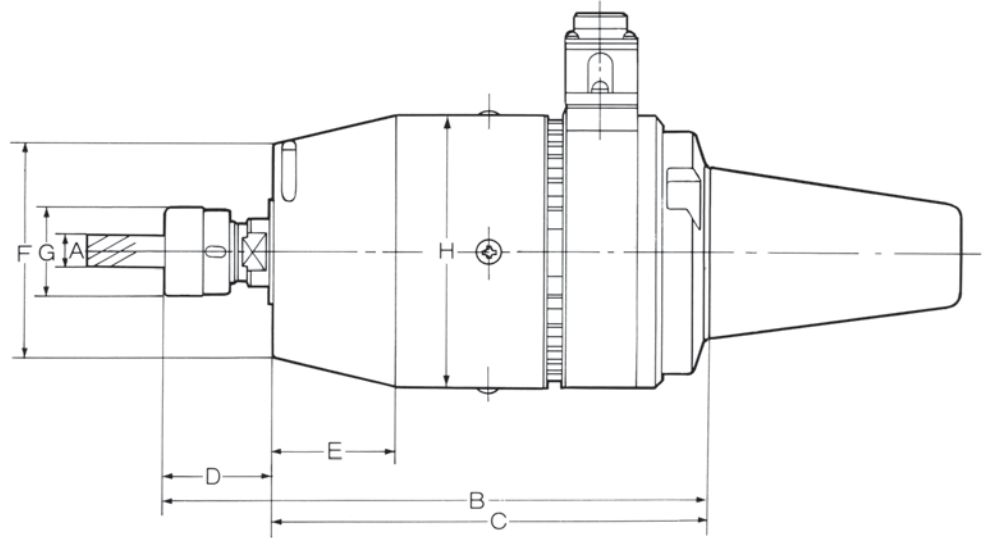
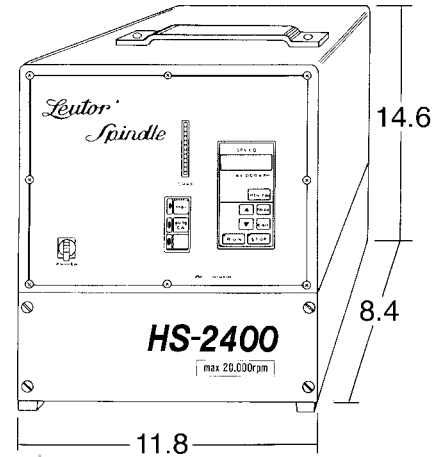
ORDER NO.	SIZE
0-102-1	.020-.039
0-102-2	.039-.059
0-102-3	.059-.079
0-102-4	.079-.098
0-102-5	.098-.118
0-102-6	.118-.138
0-102-7	.138-.157
0-102-8	.157-.197
0-102-9	.197-.236
0-102-10	.236-.276

LEUTER HI-SPEED HEAD MODEL #HS-2400



POWER SUPPLY

- QUICK POWER CONNECTOR
Quick disconnecting electric cord provided with power supply.



HI-SPEED HEAD

ORDER NO	R.P.M.	OUTPUT	COLLET	RANGE A	B	C	D	E	F	G	H	WT.(lb)
HS-2400	4000-20000	400W	#104	.118-.512	8.66	6.96	1.70	1.97	3.46	1.97	4.41	29

Note: Select the shank (bolted-on and replaceable) when ordering.

Note: Complete with shank, power supply, wrenches and collets (1 ea. for 1/8, 1/4, 3/8 and 1/2").

SHANKS

TAPER	V FLANGE	BT FLANGE	NMTB	STRAIGHT
35	—	10235	—	—
40	11140	10240	10400	—
45	11145	10245	—	—
50	11150	10250	10500	—
3/4	—	—	—	11006
1	—	—	—	11008

Note: Both V and BT shanks come without flange for ATC.

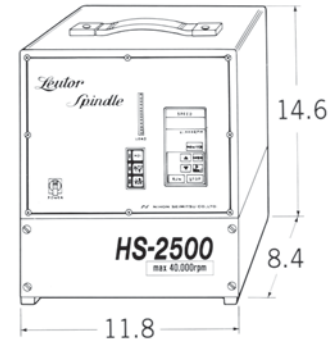
COLLETS

ORDER NO.	SIZE
0-104-3	.118-.138
0-104-4	.138-.157
0-104-5	.157-.197
0-104-6	.197-.236
0-104-7	.236-.276
0-104-8	.276-.315
0-104-9	.315-.354
0-104-10	.354-.394
0-104-11	.394-.433
0-104-12	.433-.472
0-104-13	.472-.512

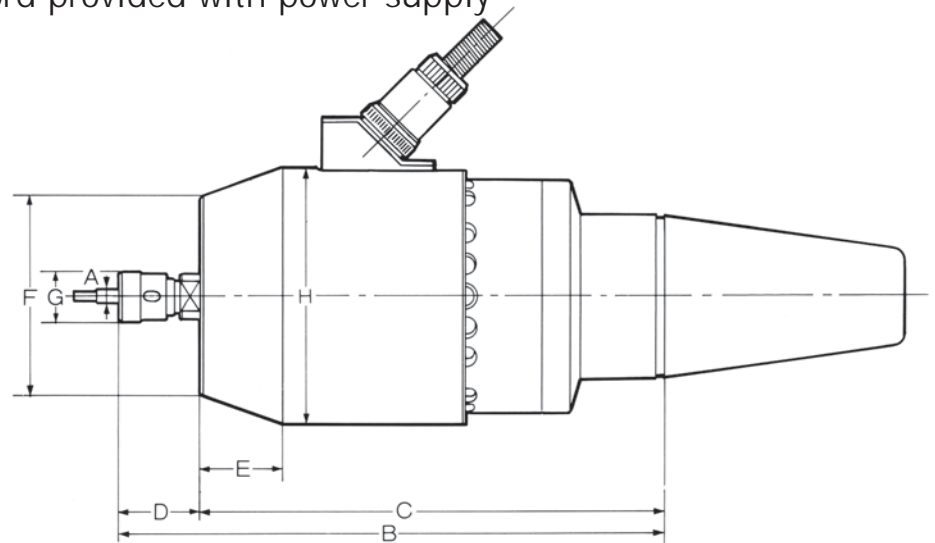
LEUTOR HI-SPEED HEAD MODEL #HS-2500



POWER SUPPLY



- QUICK POWER CONNECTOR
Quick disconnecting electric cord provided with power supply



HI-SPEED HEAD

ORDER NO.	R.P.M.	OUTPUT	COLLET	RANGE A	B	C	D	E	F	G	H	WT. (lb.)
HS-2500	5000-40000	200W	#102	.020-.276	7.47	5.95	1.52	.93	2.99	.87	4.33	15

Note: Select the shank (bolted-on and replaceable) when ordering.

Note: Complete with shank, power supply, wrenches and collets (1 ea. for 1/8, 3/16 and 1/4").

SHANKS

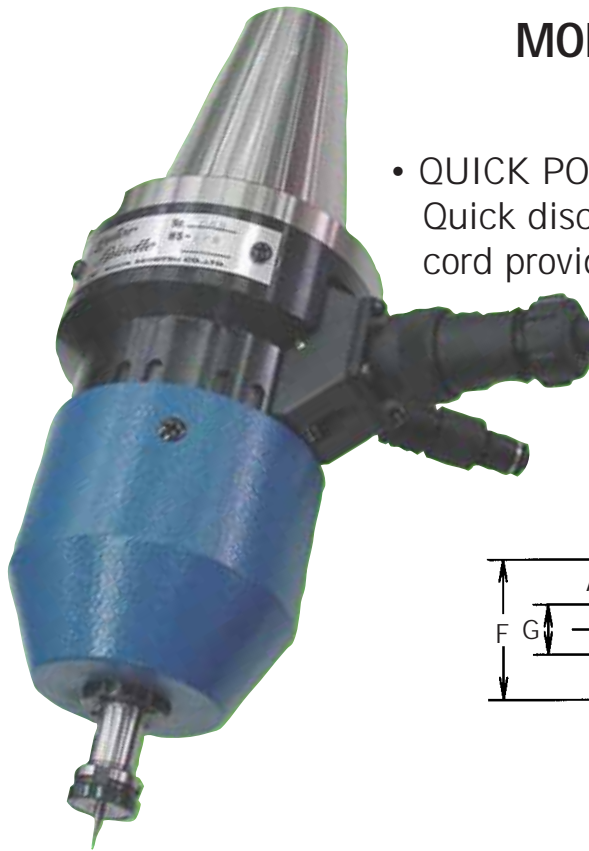
TAPER	V FLANGE	BT FLANGE	NMTB	STRAIGHT
35	—	10235	—	—
40	11140	10240	10400	—
45	11145	10245	—	—
50	11150	10250	10500	—
3/4	—	—	—	11006
1	—	—	—	11008

Note: Both V and BT shanks come without flange for ATC.

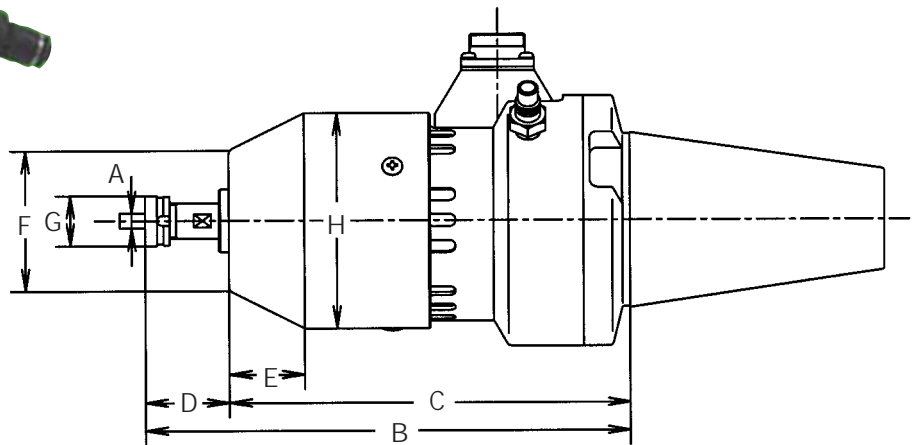
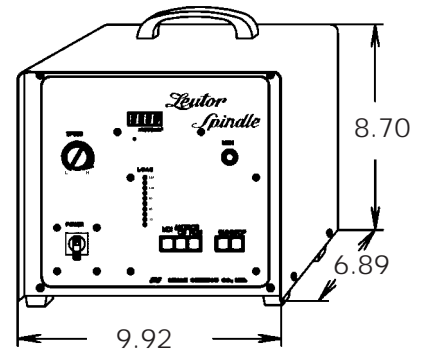
COLLETS

ORDER NO.	SIZE
0-102-1	.020-.039
0-102-2	.039-.059
0-102-3	.059-.079
0-102-4	.079-.098
0-102-5	.098-.118
0-102-6	.118-.138
0-102-7	.138-.157
0-102-8	.157-.197
0-102-9	.197-.236
0-102-10	.236-.276

LEUTOR HI-SPEED HEAD MODEL #HS-2600



- QUICK POWER CONNECTOR
Quick disconnecting electric cord provided with power supply.



HI-SPEED HEAD

ORDER NO.	R.P.M.	OUTPUT	COLLET	RANGE A	B	C	D	E	F	G	H	WT. (lb)
HS-2600	20,000-60,000	300W	#105	.039-.236	7.59	6.38	1.31	1.18	2.20	.787	3.39	15.6

Note: Select the shank (bolted-on and replaceable) when ordering.

Note: Complete with shank, power supply, wrenches and a complete set of collets (11 pcs).

Note: Air is required for cooling.

Note: Collets can be used at a nominal diameter only.

SHANKS

TAPER	V FLANGE	BT FLANGE	NMTB	STRAIGHT
35	--	10235	--	--
40	11140	10240	10400	--
45	11145	10245	--	--
50	11150	10250	10500	--
3/4	--	--	--	11006
1	--	--	--	11008

Note: Both V and BT shanks come without flange for ATC.

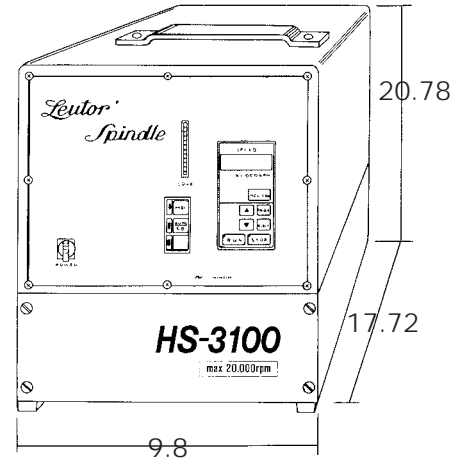
COLLETS

ORDER NO.	SIZE
0-105-1	.0394
0-105-1.5	.0591
0-105-2	.0787
0-105-2.5	.0984
0-105-3	.1181
0-105-3.5	.1250
0-105-4	.1575
0-105-4.5	.1875
0-105-5	.1969
0-105-5.5	.2165
0-105-6	.2362

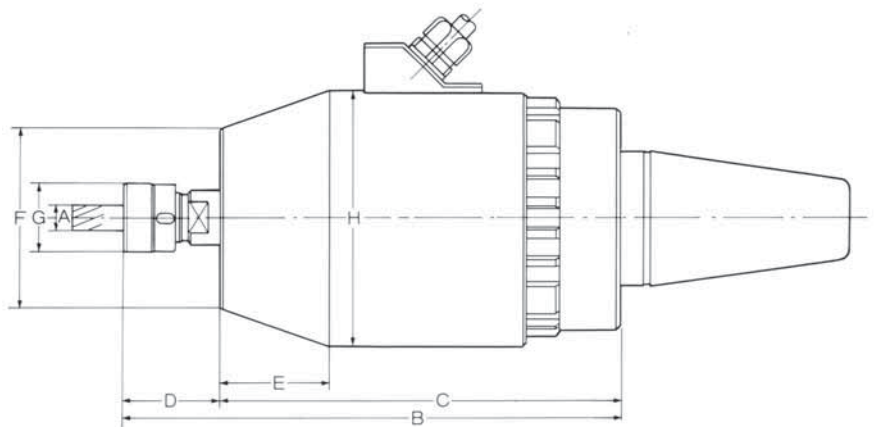
LEUTER HI-SPEED HEAD MODEL #HS-3100



POWER SUPPLY



- QUICK POWER CONNECTOR
Quick disconnecting electric cord provided with power supply



HI-SPEED HEAD

ORDER NO.	R.P.M.	OUTPUT	COLLET	RANGE A	B	C	D	E	F	G	H	WT. (lb)
HS-3100	5000-20000	600W	#104	.118-.512	10.54	8.62	1.92	2.20	3.66	1.42	5.20	35

Note: Complete with shank, power supply, wrenches and collets (1 ea. for 1/8, 3/16, 1/4, 3/8 and 1/2").

SHANK

TAPER	V FLANGE	BT FLANGE	NMTB
50	11150	10250	10500

Note: Both V and BT shanks come without flange for ATC.

Note: Select the shank when ordering as it is an integral part of spindle and is not replaceable.

COLLETS

ORDER NO.	SIZE
0-104-3	.118-.138
0-104-4	.138-.157
0-104-5	.157-.197
0-104-6	.197-.236
0-104-7	.236-.276
0-104-8	.276-.315
0-104-9	.315-.354
0-104-10	.354-.394
0-104-11	.394-.433
0-104-12	.433-.472
0-104-13	.472-.512