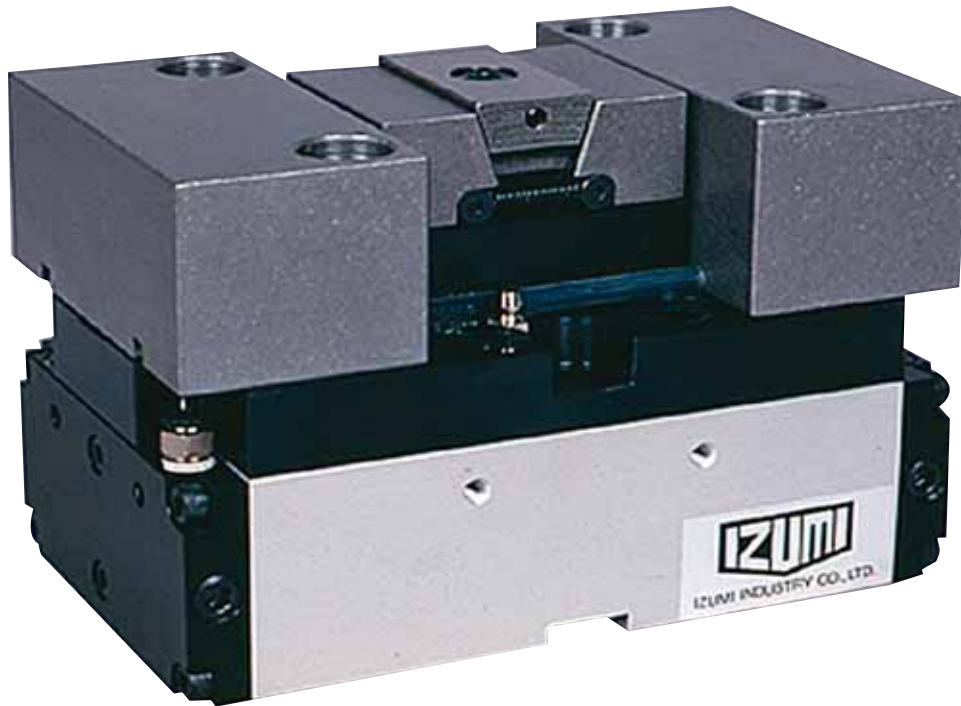


## IZUMI AIR SYSTEM VISES

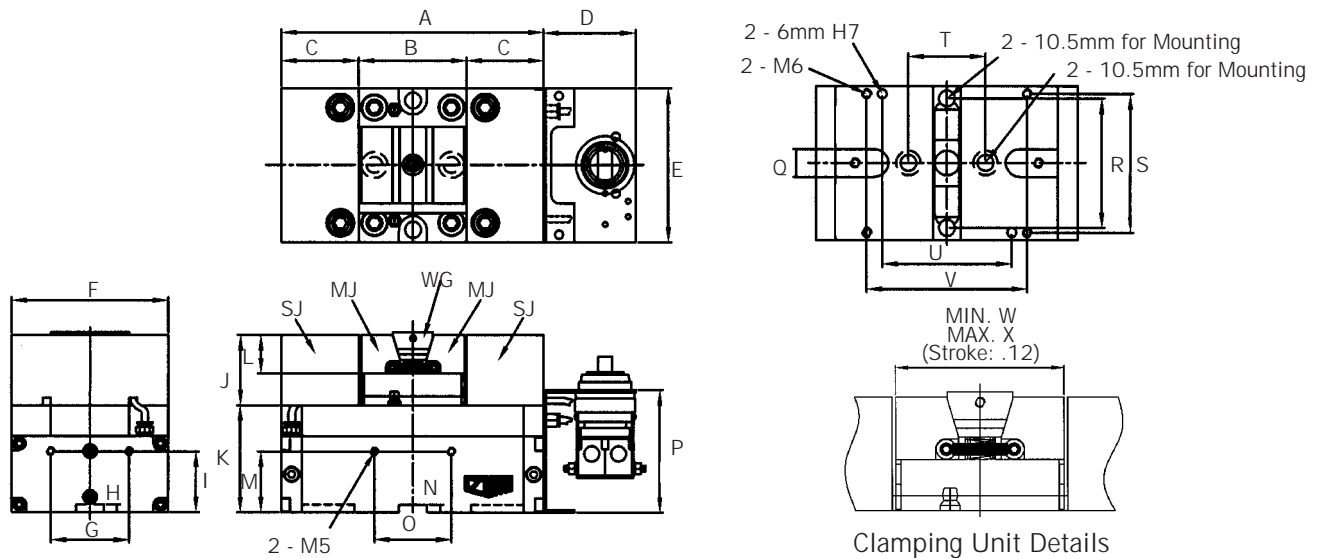


- DUAL-WEDGE CLAMPING MECHANISM
- GENERATES OPTIMUM CLAMPING FORCE WITH COMPACT BUILT-IN 4 CYLINDER SPECIAL CAM MECHANISM
- MAINTAINS CLAMPING FORCE EVEN AFTER DETACHMENT FROM AIR SOURCE
- CLAMPING OF UPTO 2 WORKPIECES SIMULTANEOUSLY
- NO WORKPIECE LIFTING
- UNLIMITED APPLICATION AND VERSATILITY OF WORK HOLDING
- FOR BOTH VERTICAL AND HORIZONTAL MACHINING CENTERS

## IZUMI AIR SYSTEM VISES

ORDER NO.	WIDTH OF FIXED JAWS (SJ)	WIDTH OF MOVABLE JAWS (MJ)	WIDTH OF DUAL-WEDGE (WG)	AIR PRESSURE (PSI)	CLAMPING FORCE (LBS.)	*WEIGHT (LBS.)
ASV100-AC	3.94	1.97	1.97	28--100	1040--1323	20
ASV100-BC		3.94	3.94			

Note: Furnished with fixed and removable jaws.



A	B	C	D	E	F	G	H	I	J	K	L
6.69	2.76	1.97	2.36	3.94	3.94	1.97	.20	1.57	1.79	2.76	.98
M	N	O	P	Q	R	S	T	U	V	W	X
1.57	.20	1.97	3.15	.71	3.31	3.54	1.97	3.31	4.09	2.64	2.76

Note: The system is shown with an optional mechanical valve.

### AIR GUN

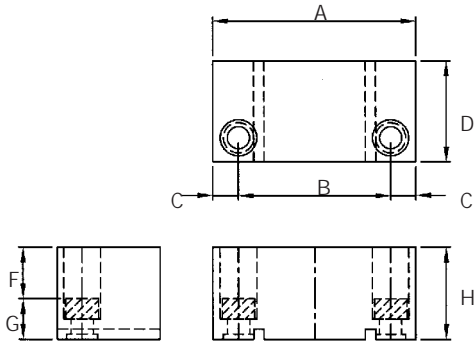


ORDER NO.	DESCRIPTION
ASG-1	AIR GUN

Note: Air Gun must be purchased separately.

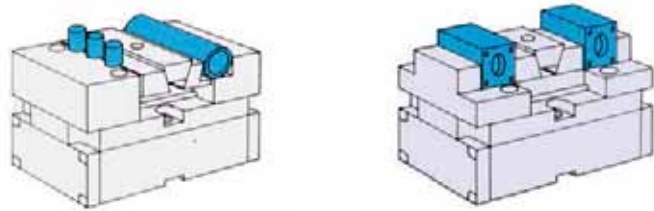
## IZUMI AIR SYSTEM VISES

### FIXED JAWS (SJ)

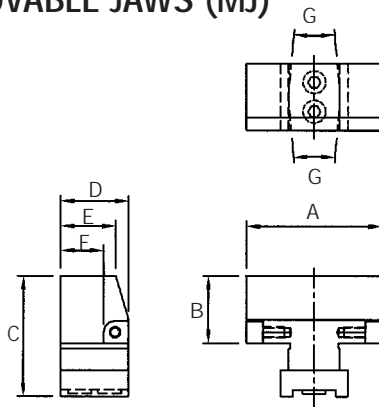


ORDER NO.	A	B	C	D	E	F	G	H
SJ-1	2.75	2.95	.49	1.97	.47	1.00	.79	1.79

Note: Fixed Jaws can be modified for a specific application as shown below.



### MOVABLE JAWS (MJ)

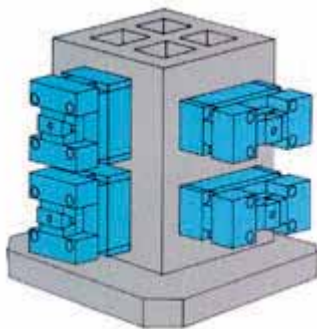


ORDER NO.	A	B	C	D	E	F	G
MJ-1	1.97	.98	1.77	.98	.79	.62	---
MJ-2	3.94						6°

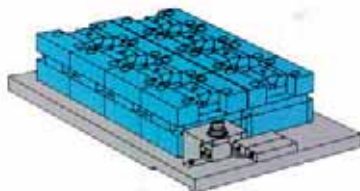
Note: Movable Jaws can be modified for a specific application as shown above.

Note: MJ-1 is for ASV100-AC and MJ-2 is for ASV100-BC.

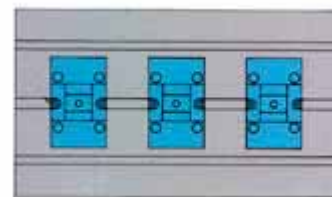
### TYPICAL APPLICATIONS



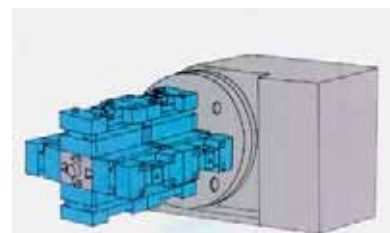
For Horizontal Machining Center.



For Vertical Machining Center.  
8 Air System Vises on subplate.



For Vertical Machining Center.



For Vertical Machining Center.  
Air System Vises mounted on Rotary Table.